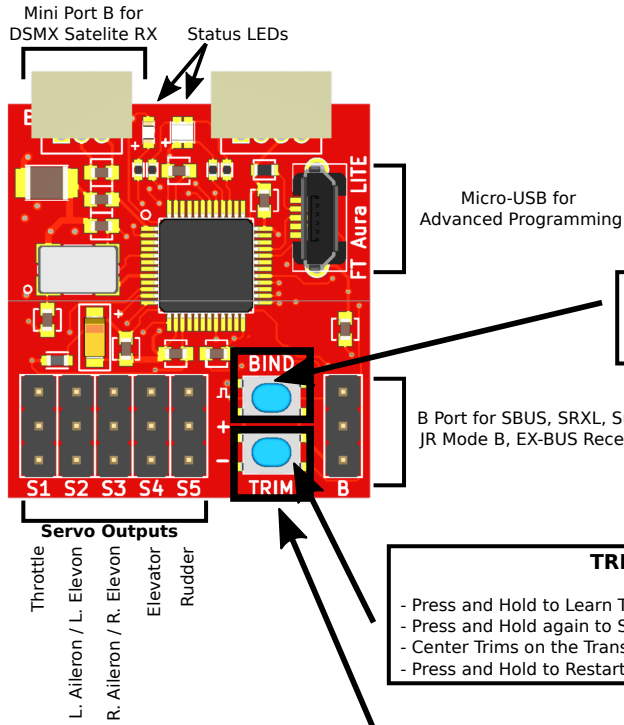




For more complete setup information and resources on your FT Aura 5 Lite, please visit [flitetest.com/FTaura5](http://flitetest.com/FTaura5)

## FT Aura 5 Lite

Powered by  
**FLY**  
INNOVATIONS



LED Legend	
—	Off
●	Solid On
○	Slow Flash
⦿	Fast Flash
⦿⦿	Very Fast Flash

**BIND Button**  
Press and Hold during Power Up to Start DSMX Satellite Binding

**TRIM Button**

- Press and Hold to Learn Trims (●)
- Press and Hold again to Save and Apply the Trims (●●)
- Center Trims on the Transmitter
- Press and Hold to Restart the Aura with new Trims

### Basic Setup without Programming

- Make sure the Aura is Powered On with a Valid Signal from the Receiver (● ●)
- Press and Hold both the BIND and TRIM Buttons to enter Quick Change Mode (●●)
- After entering Quick Change Mode, you can:
  - Check Sensor Directions
    - Roll the Aircraft Wings RIGHT to confirm the Ailerons move in the direction to correct the Wings LEFT
    - Pitch the Aircraft Nose UP to confirm the Elevator moves in the direction to correct the Nose DOWN
    - Yaw the Aircraft Nose RIGHT to confirm the Rudder moves in the direction to correct the Nose LEFT
  - Change Servo Directions if needed
    - Hold the corresponding Transmitter Stick over for 6 seconds until the Servo reverses direction
  - Change Flight Mode 2 between 3Axis and 6Axis Level Assist
    - Press and Hold the BIND Button until you see a Blue LED ●
    - The Servos will cycle back and forth TWICE to confirm Flight Mode 2 has changed to 6Axis
    - The Servos will cycle back and forth ONCE to confirm Flight Mode 2 has changed to 3Axis
  - Change Wing Type between Ailerons and Elevons
    - Press and Hold the TRIM Button until you see a Red LED ●
    - The Servos will cycle to confirm the change has been stored
    - Hold the corresponding Transmitter Stick full over if you need to Change a Servo Direction
- Press and Hold both the BIND and TRIM Buttons again to exit Quick Change Mode and Restart the Aura

## LED Status

	Orange	Blue	Green	Red
<b>Calibrating Sensor</b>	—	●●●	—	—
<b>Searching for a Receiver (RX)</b>	○	↔	↔	↔
<b>Powered On and Operating</b> + Not Receiving RX Signal + Receiving Valid RX Signal + Receiving Invalid RX Signal + In Failsafe Condition + In Launch Assist Mode	●●●●	— — ● —	— — ● —	— — — ●
<b>Powered On While Moving (Bad Gyro Calibration)</b> + Not Receiving RX Signal + Receiving Valid RX Signal + Receiving Invalid RX Signal + In Failsafe Condition	●○	— — ● —	— — ● —	— — — —
<b>Quick Trim Mode</b> + Learning Trims + Trims Saved	— —	— ●●	— —	— —
<b>Quick Change Mode</b> + Direction Check and Servo Reversing + Control Mode Toggled + Wing Type Toggled	— — —	— ● —	— — ●●	— — — ●

### Launch Assist

- Launch Assist will command a brisk climb while keeping the wings level
- To activate Launch Assist:
  - + HOLD full Left Aileron and full Up Elevator with Throttle Low and Rudder Centered for 3 seconds
- When Launch Assist is active:
  - + The Red LED will flash (●●)
  - + The Ailerons and Elevator will move to keep the wings level and command a climb
- If you are having trouble activating Launch Assist:
  - + Make sure your Trims are centered
  - + Keep the aircraft immobile for 5 seconds with the Throttle Low and Ail/Ele/Rud controls centered
- Launch Assist is deactivated and normal control resumes when the Aileron or Elevator is moved away from center after advancing the throttle